

2101 Trinity Road
Duluth, MN 55811
Phone: 218-733-7600 800-432-2884
www.lsc.edu

LSC Mission

Lake Superior College (LSC) provides high quality, affordable higher education that **benefits diverse learners, employers and the community. LSC's academic, technical, continuing education, and workforce development offerings prepare learners for a rapidly changing global community. Our services support learning, and our partnerships connect the college and its learners to a broader spectrum of community life. Our mission is characterized by:**

- A strong sense of community**
- Trust, respect, and integrity**
- Personal attention**
- Accountability**
- Innovation and flexibility**
- Life-long learning and personal growth**

About the Fact Book

The data compiled in this Fact Book are furnished in order to provide a brief statistical profile of the college for fiscal year 2013 and fall 2013 (30th day). In addition, historical trend data are reported. Unless otherwise noted, data are shown by fiscal year.

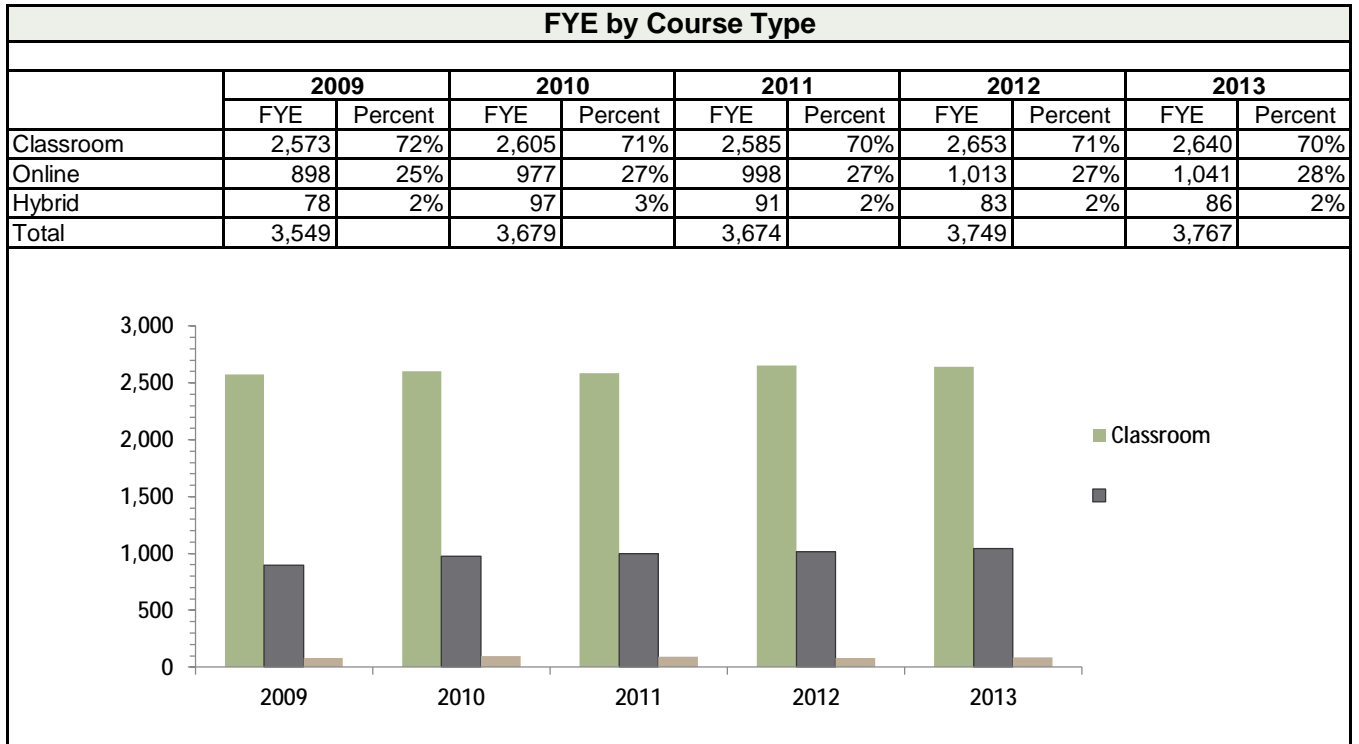
The Fact Book may be used as a reference tool in planning, assessment, writing grant proposals, preparing reports, and other projects. While not all available data have been gathered, that which are presented here accurately reflect the major areas of the college.

Community College Survey of Student Engagement (CCSSE)40

Definitions 41-42

	2004	2005	2006	2007	2008	2009	2010	2011	2012	2013
Headcount	2,768	2,854	3,246	3,459	3,215	4,761	3,752	3,592	4,125	3,980

Online Enrollment and Course Sections



Source: MnSCU Management Reports / Distance Learning / Enrollment by Media Code

Sections Offered by Course Type										
	2009		2010		2011		2012		2013	
	Count	Percent	Count	Percent	Count	Percent	Count	Percent	Count	Percent
Classroom	2,140	82%	1,972	80%	1,998	80%	2,074	81%	2,162	81%
Online	390	15%	407	17%	416	17%	440	17%	462	17%
Hybrid	72	3%	79	3%	73	3%	57	2%	49	2%
Total	2,602		2,458		2,487	100%	2,571		2,673	

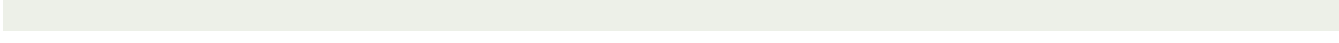
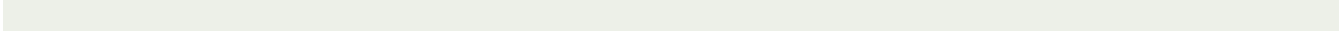
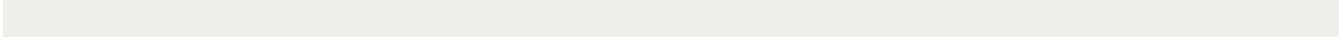
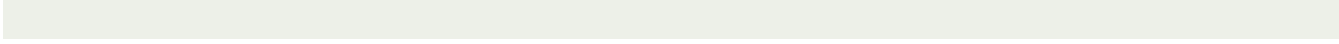
Source: MnSCU Management Reports / Distance Learning / Enrollment by Media Code

	Count	Percent	Count	Percent	Count	Percent	Count	Percent	Count	Percent
Classroom	35,015	77%	32,639	74%	31,796	73%	32,940	74%	33,172	73%
Online	9,633	21%	10,499	24%	10,662	25%	10,854	24%	11,150	25%
Hybrid	935	2%	1,187	3%	1,046	2%	865	2%	862	2%
Total	45,583		44,325		43,504		44,659		45,184	

	FYE	Percent	FYE	Percent	FYE	Percent	FYE	Percent	FYE	Percent
Developmental	301	8%	331	9%	310	8%	308	8%	311	8%
College Level	3,248	92%	3,346	91%	3,364					



						Fall 2013 - Fall 2012
Subject	Subject Description	Credits	FTE	Credits	FTE	FTE % Change
ABTE	Auto Body Technology	268	17.87	270	18.00	-0.74%
ACCT	Accounting	1061	70.73	846	56.40	25.41%
ADN	Professional Nursing	2275	151.67	1812	120.80	25.55%
ADSC	Administrative Support	1082	72.13	1327	88.47	-18.46%
ALTH	Allied Health	695	46.33	689	45.93	0.87%
ANTH	Anthropology	120	8.00	108	7.20	11.11%
ARCH	Architectural Technology	34	2.27	249	16.60	-86.35%
ART	Art	1801	120.07	1936	129.07	-6.97%
ASTE	Auto Service Technology	748	49.87	744	49.60	0.54%
ASTR	Astronomy	192	12.80	192	12.80	0.00%
AVIA	Aviation	279	18.60	279	18.60	0.00%
BIOL	Biology	4323	288.20	4459	297.27	-3.05%
BLDG	Building Construction	455	30.33	402	402 28.00	



Fall 2013 - Fall
2012

Division	Credits	FTE	Credits	FTE
	10494	699.60	10879	725.27
	895	59.67	956	63.73
	7357.5	490.50	7229	481.93
	30168	2011.20	30782	2052.13
	0	0.00	10	0.67
	48914.5	3260.97	49856	3323.73

* Other includes WDCE

Credits	FTE	Credits	FTE
13117	874.47	13271	884.73
1012	67.47	1335	89.00
34785.5	2319.03	35250	2350.00
48914.5	3260.97	49856	3323.73

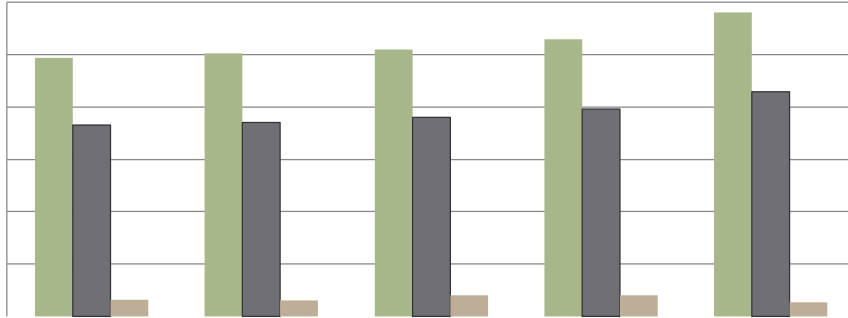
Credits	FTE	Credits	FTE
2885	192.33	3198	213.20
296	19.73	378	25.20
45733.5	3048.91	46280	3085.33
48914.5	3260.97	49856	3323.73

Source: MnSCU ISRS Operational Data

Student Demographic Profile

Gender Distribution

	Fall 09		Fall 10		Fall 11		Fall 12		Fall 13	
	Count	Percent	Count	Percent	Count	Percent	Count	Percent	Count	Percent
Female	2,469	55%	2,516	56%	2,551	55%	2,650	55%	2,905	56%
Male	1,826	41%	1,850	41%	1,899	41%	1,982	41%	2,146	41%
Not reported	159	4%	149	3%	202	4%	202	4%	134	3%
Total	4,454		4,515		4,652		4,834		5,185	



Source: 30th Day Enrollment Tables/MnSCU ISRS Operational Data

Full-Time Part-Time Status

	Fall 09		Fall 10		Fall 11		Fall 12		Fall 13	
	Count	Percent	Count	Percent	Count	Percent	Count	Percent	Count	Percent
Full-Time	2,389	54%	2,406	53%	2,294	49%	2,147	44%	2,119	41%
Part-Time	2,065	46%	2,109	47%	2,358	51%	2,687	56%	3,066	59%
Total	4,454		4,515		4,652		4,834		5,185	

Source: 30th Day Enrollment Tables/MnSCU ISRS Operational Data

Count	Percent	Count	Percent	Count	Percent	Count	Percent	Count	Percent
241	5%	178	4%	164	4%	249	5%	684	13%



	Count	Percent	Count	Percent	Count	Percent	Count	Percent	Count	Percent
African American	93	2%	107	2%	149	3%	182	4%	175	3%
Asian	56	1%	45	1%	42	1%	53	1%	61	1%
Caucasian	3,864	87%	3,872	86%	3,925	84%	3,984	82%	4,281	83%
Hispanic	66	1%	77	2%	92	2%	106	2%	118	2%
Native American	55	1%	67	1%	72	2%	81	2%	88	2%
Nat. Hawaiian/Pac.Isl.	2	0%								



Student Level

	Fall 10		Fall 11		Fall 12		Fall 13			
	Count	Percent	Count	Percent	Count	Percent	Count	Percent		
Freshman	2,888	65%	2,840	63%	2,823	61%	3,049	63%	3,298	64%
Sophomore	1,566	35%	1,675	37%	1,829	39%	1,785	37%	1,887	36%
Total	4,454		4,515		4,652		4,834		5,185	

Source: 30th Day Enrollment Tables/MnSCU ISRS Operational Data

Out23.01615(u-(101615(u)36.0082(t)8.00832(115.45(0)10.9987(.15.000

	Count	Percent	Count	Percent	Count	Percent	Count	Percent	Count	Percent
WI	468	77.1%	465	80.2%	494	81.3%	531	83.2%	562	85.9%
FL	11	1.8%	7	1.2%	6	1.0%	7	1.1%	10	1.5%
ND	16	2.6%	14	2.4%	20	3.3%	14	2.2%	9	1.4%
IL	1	0.2%	2	0.3%	7	1.2%	12	1.9%	7	1.1%
MI	16	2.6%	14	2.4%	9	1.5%	14	2.2%	7	1.1%
CA	6	1.0%	7	1.2%	6	1.0%	8	1.3%	5	0.8%
SD	3	0.5%	4	0.7%	2	0.3%	2	0.3%	5	0.8%
TX	5	0.8%	4	0.7%	5	0.8%	8	1.3%	5	0.8%
PA	4	0.7%	4	0.7%	5	0.8%	1	0.2%	4	0.6%
VA	2	0.3%	3	0.5%	2	0.3%	1	0.2%	4	0.6%
AE		0.0%		0.0%		0.0%		0.0%	3	0.5%
GA	1	0.2%	2	0.3%	3	0.5%	1	0.2%	3	0.5%
MA	2	0.3%	1	0.2%	1	0.2%		0.0%	3	0.5%
NC	1	0.2%	4	0.7%	3	0.5%	1	0.2%	3	0.5%
OH	4	0.7%	3	0.5%	1	0.2%		0.0%	3	0.5%
CO	10	1.6%	6	1.0%	2	0.3%	2	0.3%	2	0.3%
KY	4	0.7%	2	0.3%	3	0.5%	2	0.3%	2	0.3%
MD		0.0%	1	0.2%	2	0.3%	1	0.2%	2	0.3%
MO	5	0.8%	2	0.3%	2	0.3%	4	0.6%	2	0.3%
NY	3	0.5%	2	0.3%	2	0.3%	2	0.3%	2	0.3%
OR		0.0%		0.0%	1	0.2%		0.0%	2	0.3%
AK	3	0.5%		0.0%		0.0%	1	0.2%	1	0.2%
AL		0.0%		0.0%		0.0%		0.0%	1	0.2%
AZ	5	0.8%	3	0.5%	4	0.7%	3	0.5%	1	0.2%
HI	1	0.2%		0.0%		0.0%		0.0%	1	0.2%
ID	1	0.2%	1	0.2%		0.0%		0.0%	1	0.2%
LA	2	0.3%		0.0%	1	0.2%	1	0.2%	1	0.2%
NV	4	0.7%	1	0.2%		0.0%	1	0.2%	1	0.2%
SC	2	0.3%	2	0.3%	1	0.2%		0.0%	1	0.2%
UT		0.0%		0.0%		0.0%		0.0%	1	0.2%
Other Out-of-State	27	4.4%	26	4.5%	26	4.3%	21	3.3%	0	0.0%
Out-of-State Total	607		580		608		638		654	

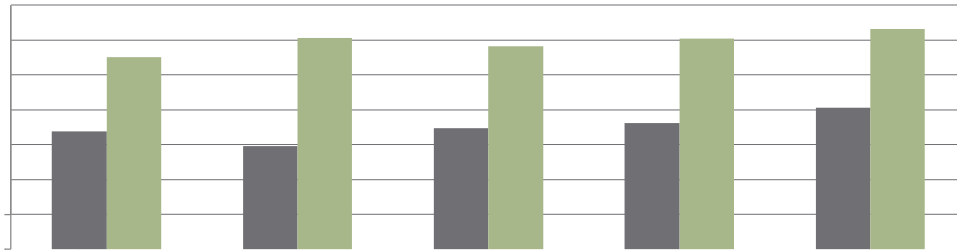
Source: 30th Day Enrollment Tables/MnSCU ISRS Operational Data

Notes: (1) This table is based on the student's permanent address (zip code)

(2) AE = Armed forces in Europe

New* and Returning Students

	Fall 09		Fall 10		Fall 11		Fall 12		Fall 13	
	Count	Percent	Count	Percent	Count	Percent	Count	Percent	Count	Percent
New	1,696	38%	1,479	33%	1,739	37%	1,808	37%	2,029	39%
Returning	2,758	62%	3,036	67%	2,913	63%	3,026	63%	3,156	61%
Total	4,454		4,515		4,652		4,834		5,185	



Source: 30th Day Enrollment Tables/MnSCU ISRS Operational Data

*New students are those who started in the fall or preceding summer; including new students with transfer credits

New* Entering Freshmen Distribution

	Fall 09		Fall 10		Fall 11		Fall 12		Fall 13	
	Count	Percent	Count	Percent	Count	Percent	Count	Percent	Count	Percent
Full-time/Part-time										
Part-time	632	50%	621	52%	713	60%	792	64%	1050	69%
Full-time	621	50%	509	45%	485	40%	455	36%	476	31%
Total	1,253		1,130		1,198		1,247		1,526	
Gender										
Male	541	43%	486	43%	487	41%	558	45%	683	45%
Female	584	47%	542	47%	541	45%	559	45%	749	49%
Not reported	128	10%	102	10%	170	14%	130	10%	94	6%
Ethnicity										
African American	36	3%	30	3%	48	4%	65	5%	48	3%
Asian	11	1%	7	1%	11	1%	10	1%	19	1%
Caucasian	986	79%	907	80%	896	75%	940	75%	1,165	76%
Hispanic	21	2%	25	2%	32	3%	31	2%	31	2%
Native American	21	2%	12	1%	18	2%	15	1%	34	2%
Nat. Hawaiian/Pac. Isl.	1	0%	4	0%	1	0%	1	0%	2	0%
Two or More Races	36	3%	40	4%	41	3%	47	4%	57	4%
Non-resident Alien**	2	0%	0	0%	1	0%	4	0%	4	0%
Not reported	140	11%	105	9%	150	13%	134	11%	166	11%
Age										
Under 18	114	9%	110	9%	107	9%	154	12%	477	31%
18-20	561	45%	552	45%	543	45%	564	45%	550	36%
21-24	203	16%	176	16%	190	16%	175	14%	155	10%
25-29	122	10%	109	10%	116	10%	138	11%	104	7%
30-39	101	8%	92	8%	126	11%	110	9%	105	7%
40 and older	132	11%	82	10%	99	8%	88	7%	108	7%
Not reported	20	2%	9	2%	17	1%	18	1%	27	2%

Source: 30th Day Enrollment Tables/MnSCU ISRS Operational Data;

* New students are those who started in the fall or preceding summer; not including transfer students

** Non-resident alien supersedes all ethnicity values

	Count	Percent	Count	Percent	Count	Percent	Count	Percent	Count	Percent
Minnesota										
St Louis	2117	47.5%	1863	41.3%	1784	38.3%	1595	33.0%	1801	34.7%
Carlton	272	6.1%	255	5.6%	246	5.3%	218	4.5%	216	4.2%
Lake	146	3.3%	132	2.9%	131	2.8%	125	2.6%	122	2.4%
Hennepin	57	1.3%	59	1.3%	71	1.5%	68	1.4%	80	1.5%
Pine	85	1.9%	81	1.8%	84	1.8%	51	1.1%	57	1.1%
Cook	33	0.7%	32	0.7%	25	0.5%	29	0.6%	38	0.7%
Ramsey	21	0.5%	24	0.5%	34	0.7%	26	0.5%	38	0.7%
Crow Wing	26	0.6%	20	0.4%	19	0.4%	26	0.5%	34	0.7%
Itasca	51	1.1%	37	0.8%	45	1.0%	33	0.7%	28	0.5%
Anoka	37	0.8%	39	0.9%	38	0.8%	30	0.6%	27	0.5%
Dakota	34	0.8%	32	0.7%	32	0.7%				

	Count	Percent	Count	Percent	Count	Percent	Count	Percent	Count	Percent
Total Students	294	7%	330	7%	311	7%	288	6%	332	6%
	4,454		4,515		4,652		4,834		5,185	

Source: 30th Day Enrollment Tables/MnSCU ISRS Operational Data

	Count	Percent	Count	Percent	Count	Percent	Count	Percent	Count	Percent
Total Students	1,753	39%	2,037	45%	2,164	47%	2,321	48%	2,290	44%
	4,454		4,515		4,652		4,834		5,185	

Source: 30th Day Enrollment Tables/MnSCU ISRS Operational Data

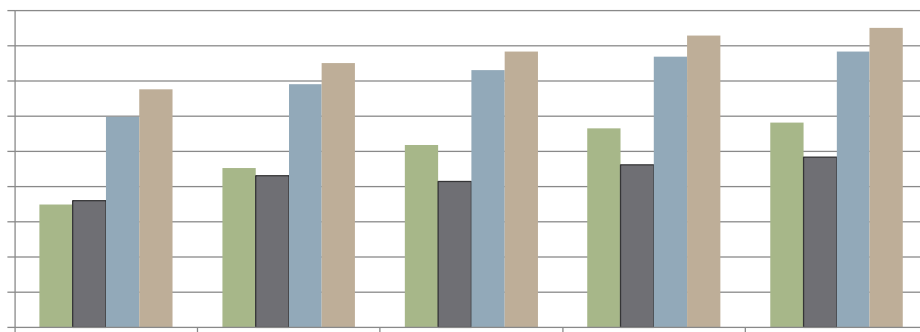
	Count	Percent	Count	Percent	Count	Percent	Count	Percent	Count	Percent
Disabled	236	5%	232	5%	235	5%	252	5%	236	5%
Total Students	4,454		4,515		4,652		4,834		5,185	

Source: 30th Day Enrollment Tables/MnSCU ISRS Operational Data

Financial Aid Awarded

Student Headcount - Common Financial Aid Sources

	2009		2010		2011		2012		2013	
	Count	Percent	Count	Percent	Count	Percent	Count	Percent	Count	Percent
Pell Grant	1,738	27%	2,262	33%	2,589	39%	2,826	37%	2,904	38%
MN State Grant	1,798	27%	2,148	32%	2,068	31%	2,304	30%	2,417	32%
Subsidized Stafford Loan	2,988	46%	3,448	51%	3,649	55%	3,840	50%	3,918	51%
Unsubsidized Stafford	3,381	52%	3,749	55%	3,912	59%	4,140	54%	4,249	56%
Total Credit Students	6,548		6,805		6,616		7,612		7,637	




Source: MnSCU ISRS Operational Data - ISRS_AWARD - Award Year (Academic year)

Award Totals (\$Millions)

	2009	2010	2011	2012	2013
Pell Grant	4.20	6.52	7.38	7.77	8.11
MN State Grant	0.90	0.83	0.44	0.67	0.86
Subsidized Stafford Loan	10.23	12.15	12.79	13.43	13.88
Unsubsidized Stafford	13.21	14.96	15.39	16.61	17.33

Source: MnSCU ISRS Operational Data - ISRS_AWARD - Award Year (Academic year)





Pell Grant
MN State Grant
Subsidized Stafford Loan
Unsubsidized Stafford



COLLEGE

	2006	2007	2008	2009	2006	2007	2008	2009	2006	2007	2008	2009	2006	2007	2008	2009
Lake Superior College	476	540	556	551	25%	24%	22%	31%	26%	29%	31%	22%	51%	53%	53%	53%



Fall 2010
Entering
Cohort

1st
Spring

2nd Fall

2nd
Spring

3rd Fall

3rd
Spring

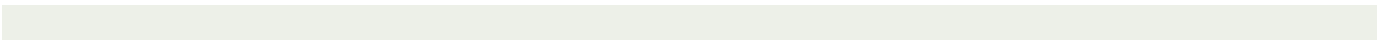
4th Fall

1st
SpringS

	Fall 2011 Entering Cohort	1st Spring	2nd Fall	2nd Spring	3rd Fall	1st Spring	2nd Fall	2nd Spring	3rd Fall
Gender									
Male	392	77%	46%	40%	19%	81%	65%	61%	59%
Female	350	81%	49%	42%	27%	91%	77%	77%	78%
Unknown	11	73%	36%	27%	18%	82%	55%	45%	36%
Ethnicity									
Amer. Indian or Alaska Native	(1)	(1)	42%	25%		(1)	42%	25%	
Asian	5	80%	60%	60%	60%	80%	60%	60%	60%
Black or African American	32	78%	31%	34%	19%	78%	59%	63%	59%
Hispanic	20	75%	40%	35%	10%	90%	70%	70%	70%
Native Hawaiiin/Pac Islander	(1)	(1)	(1)	(1)		(1)	(1)	(1)	
White	631	80%	49%	42%	23%	86%	72%	70%	69%
Two or more races	32	72%	41%	31%	31%	84%	63%	53%	63%

Status of Graduates Summary

Total Graduates
Related Work Full-time
Related Work Part-time
Related Employment Rate
Continuing Education Count
Continuing Education %
Unrelated Work Seeking Related
Available for Work but Unemployed
Unrelated Work Not Seeking Related
Unavailable for Work
Status Unknown
Total Related Work
Total Available for Related Work



Projected 30sed 3r Population Change for St.y

	2015	2020	2025	2030	2035	2040	2045	2015 - 2020 % Change	2015 - 2045 % Change
Aitkin	17,460	17,488	17,086	16,477	15,809	15,327	15,076	0.2%	-13.7%
Carlton	37,494	38,596	39,399	40,084	40,500	40,630	40,514	2.9%	8.1%
Cook	5,376	5,417	5,368	5,264	5,016	4,811	4,628	0.8%	-13.9%
Itasca	47,344	48,339	48,834	48,865	48,543	48,056	47,721	2.1%	0.8%
Koochiching	13,589	13,738	13,783	13,758	13,651	13,435	13,240	1.1%	-2.6%
Lake	11,217	11,322	11,335	11,184	11,013	10,751	10,521	0.9%	-6.2%
St Louis County	200,077	200,794	201,472	200,299	198,058	193,913	189,161	0.4%	-5.5%
	332,557	335,694	337,277	335,931	332,590	326,923	320,861	0.9%	-3.5%
	5,537,385	5,772,258	5,987,609	6,182,306	6,363,010	6,537,710	6,234,930	4.2%	12.6%

*Projected numbers are rounded to the nearest 10.

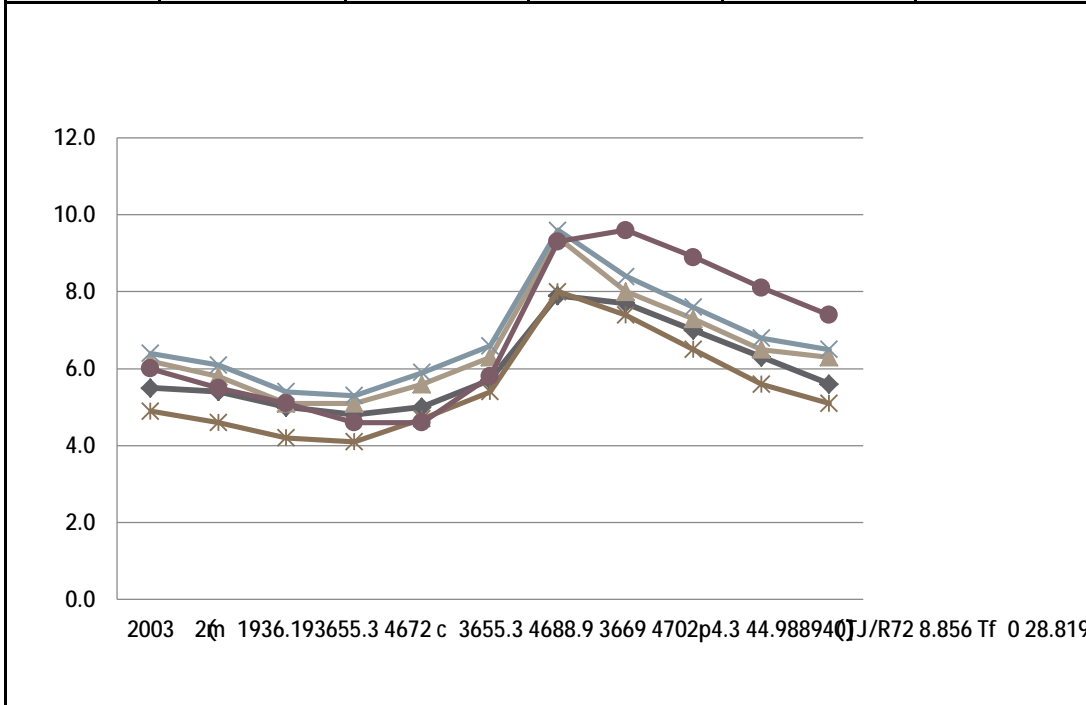
Projected 30-Year Population Change for St. Louis County



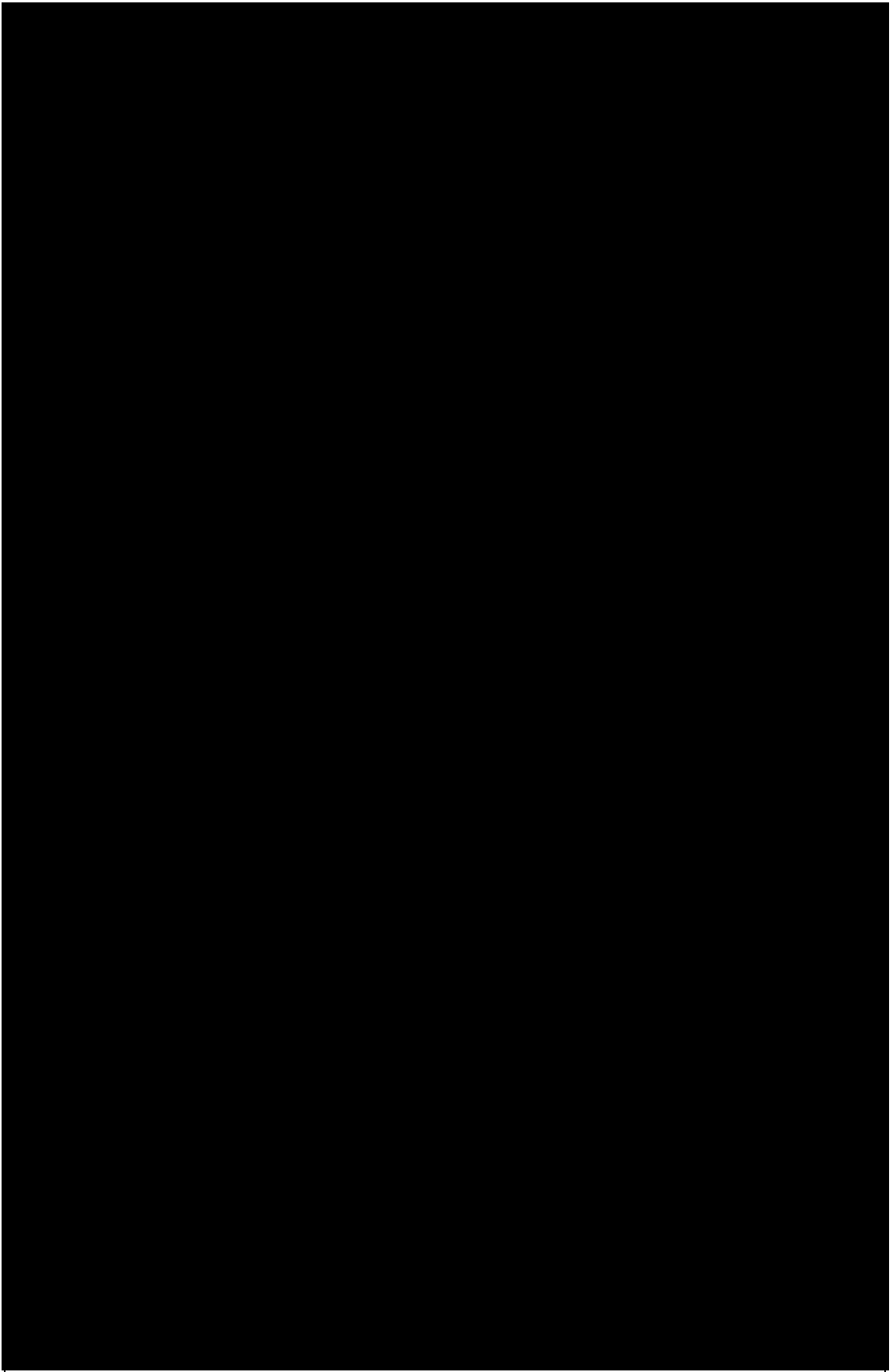
Grade



Average Annual Unemployment Rates (%)					
	City of Duluth	St. Louis County	Region 3	MN	US
2003	5.5	6.2	6.4	4.9	6.0
2004	5.4	5.8	6.1	4.6	5.5
2005	5.0	5.1	5.4	4.2	5.1
2006	4.8	5.1	5.3	4.1	4.6
2007	5.0	5.6	5.9	4.7	4.6
2008	5.7	6.3	6.6	5.4	5.8
2009	7.9	9.4	9.6	8.0	9.3
2010	7.7	8.0	8.4	7.4	9.6
2011	7.0	7.3	7.6	6.5	8.9
2012	6.3	6.5	6.8	5.6	8.1
2013	5.6	6.3	6.5	5.1	7.4

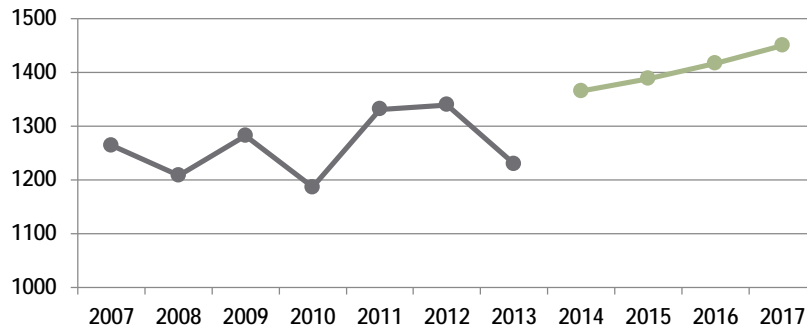


Source: Department of Employment and Economic Development
<https://apps.deed.state.mn.us/lmi/laus/> (accessed July 2014)
 Rates are not seasonally adjusted

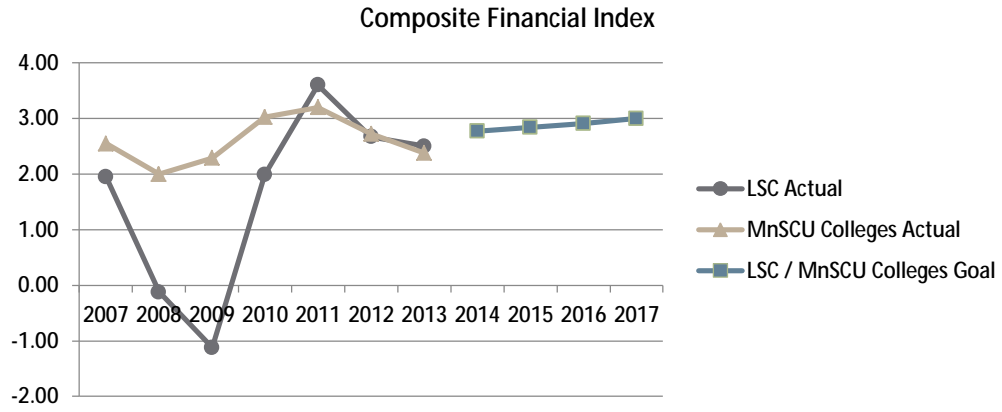


Be the Partner of Choice to Meet Workforce and Community Needs

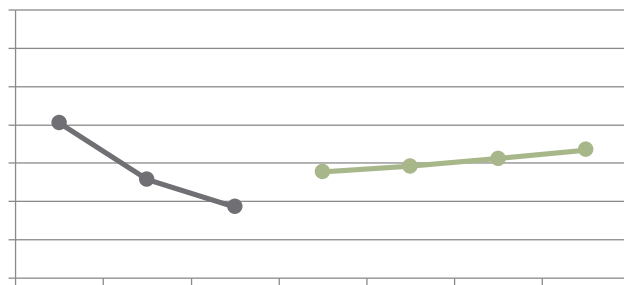
Certificates and Degrees Awarded



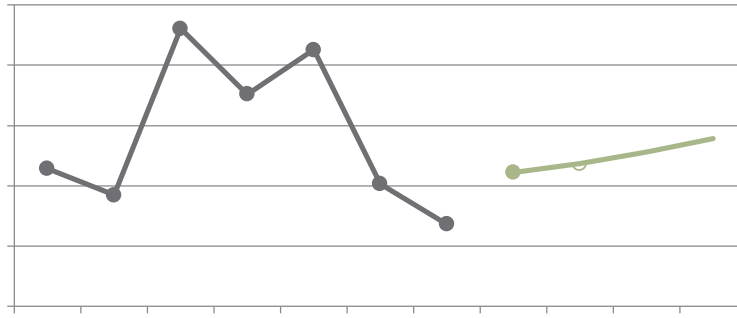
Steward Financial and Physical Resources



Develop New Resources



Develop New Resources



Collective Success of the MnSCU System in Serving the State and Regions

Definitions

Academic Year (AY) - The academic year begins with the fall term and ends with the following summer term.

CITS (College in the Schools) - A Post-Secondary Enrollment Option (see PSEO) wherein high school students receive college credit for courses taught at the high school. This is in contrast to PSEO students who receive credit for courses taught at the college or online by college faculty.

Credit Student - A student enrolled in at least one course for credit.

Customized Training courses - Contract courses, not open to the public, which are customized to meet specific company training needs. These courses may be credit or non-credit.

Developmental Course - A course designed to prepare a student for entry into college level courses.

First Generation Student - Federal Definition - A student is considered to be first generation if neither parent earned a bachelor's degree.

First Generation Student - MN Definition - A student is considered to be first generation if neither parent received any post-secondary education.

Fiscal Year (FY) - The fiscal year begins July 1st and ends June 30th, and is named for the calendar year in which the fiscal year ends. In terms of semesters, the fiscal year begins with the summer term and ends with the following spring semester.

Freshman - A student who has earned a cumulative total of fewer than 30 credits.

FTE (Full-time Equivalent) - The number of full-time equivalent students, which is calculated by dividing the total student credit hours by the number of credits constituting a full load for the semester (15 credits for undergraduates). FTE is a measure of semester enrollment.

Full-Time Student - A student who is registered for 12 or more credits during a semester.

FYE (Full-year Equivalent) - The number of full-year equivalent students, which is calculated by dividing the total student credit hours by the number of credits constituting a full load for the year (30 credits for undergraduates). FYE is a measure of annual enrollment.

Hybrid Course - A web-enhanced course with limited on-campus meeting times.

New Student - A student who first attempted credits at Lake Superior College during the reported fall semester or the preceding summer.

Non-Credit Student - A student enrolled in only non-credit courses.

Non-Traditional Student - A student who is enrolled in a non-traditional program.

PSEO Student - A high school student receiving college credit through the Post-Secondary Enrollment Options (PSEO) Program.

Retention Rate - The number of students who registered for a semester during the specified term divided by the total number of students in the cohort.

Returning Student - A student who has attempted credits at Lake Superior College prior to the reported fall semester or the preceding summer.

Sophomore - A student who has earned a cumulative total of 30 or more credits.

Success Rate - The sum of the number of students in the entering cohort who have graduated, transferred, or are retained at the college during the specified term divided by the total number of students in the cohort.

Transfer Rate - The number of students enrolled at another post-secondary educational institution divided by the number of students in the cohort.

Underrepresented Student - A student who meets one or more of the following criteria: (1) Student of color, (2) Low-income, (3) First-Generation student.

Unduplicated Headcount - The number of distinct students enrolled over the course of a year. Each student is counted only once, regardless of the number of terms the student is enrolled within the year.